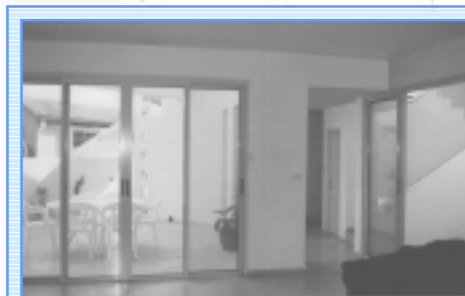
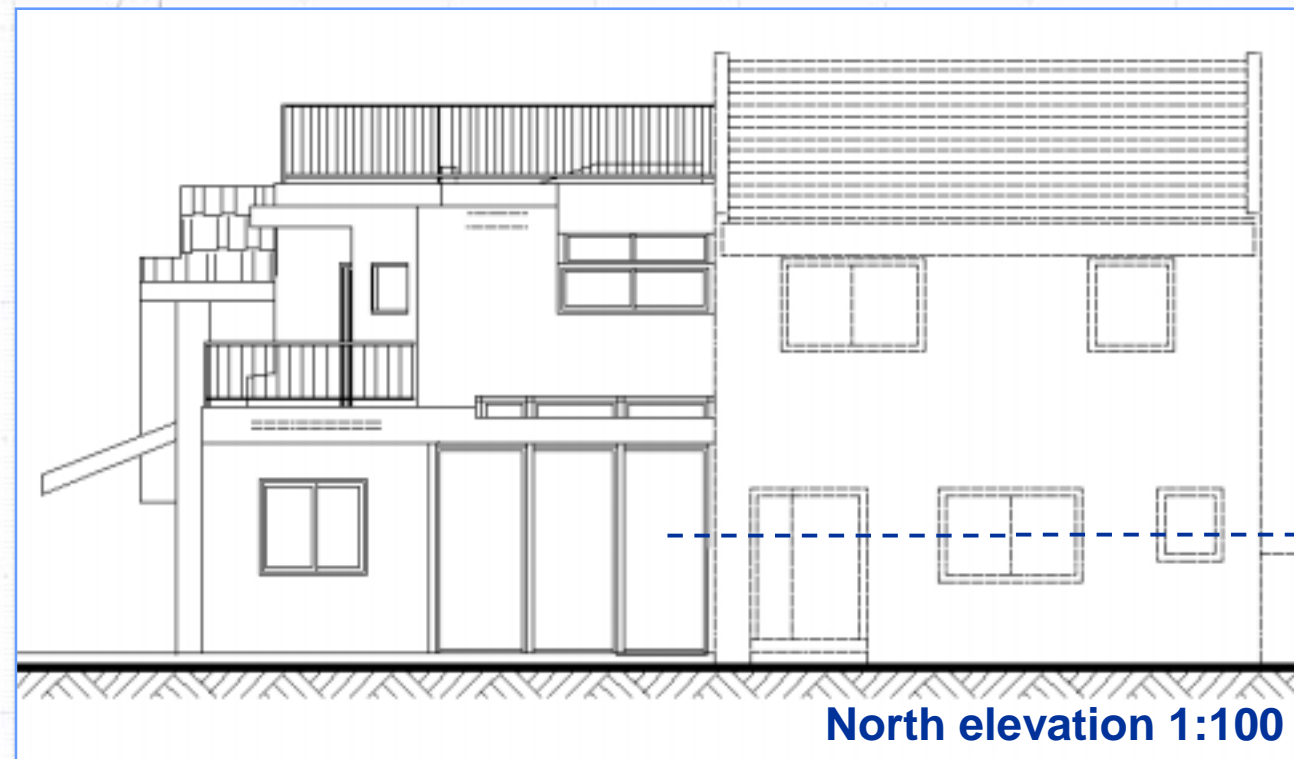


Manzur Residence

A private house in Ramat-Hen, Israel

- A private commission to plan a semi-detached house of 180sqm on a 297sqm lot, for a family of five, including planning permissions and site inspection.
- The design concept: The post-patriarchal house is a composition of reliant room units and garden units. Although not optimal in built-area terms, the territory defined by such spatial arrangement allows greater independence and has a rewarding airy atmosphere.



Living room



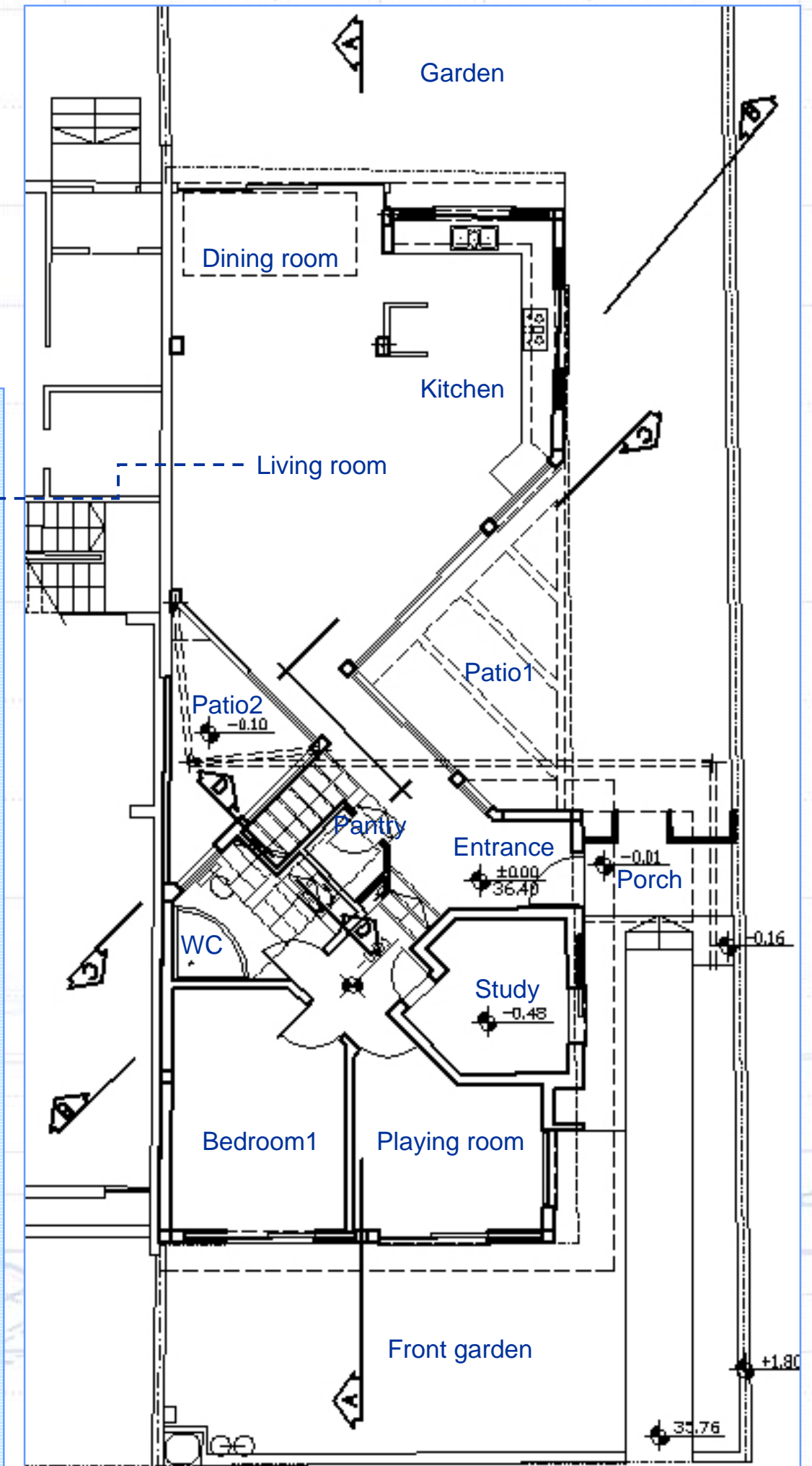
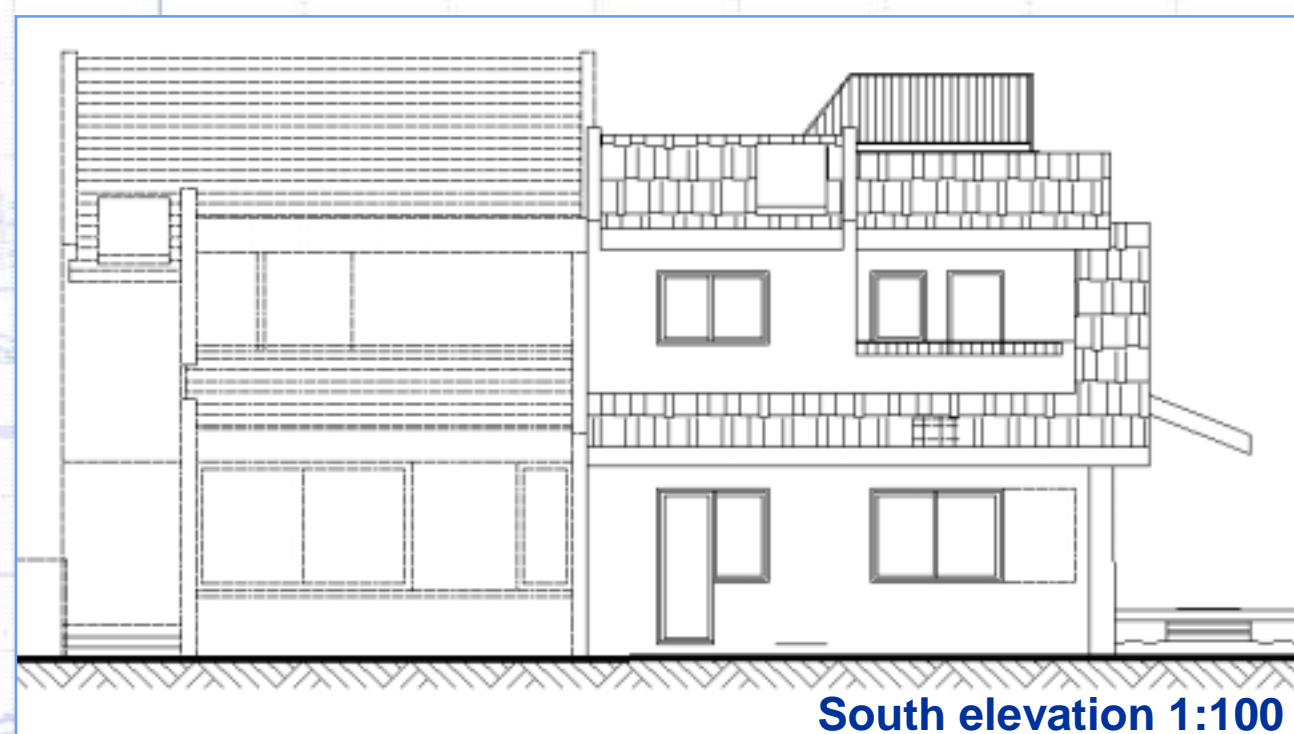
Dining room elevation



South elevation



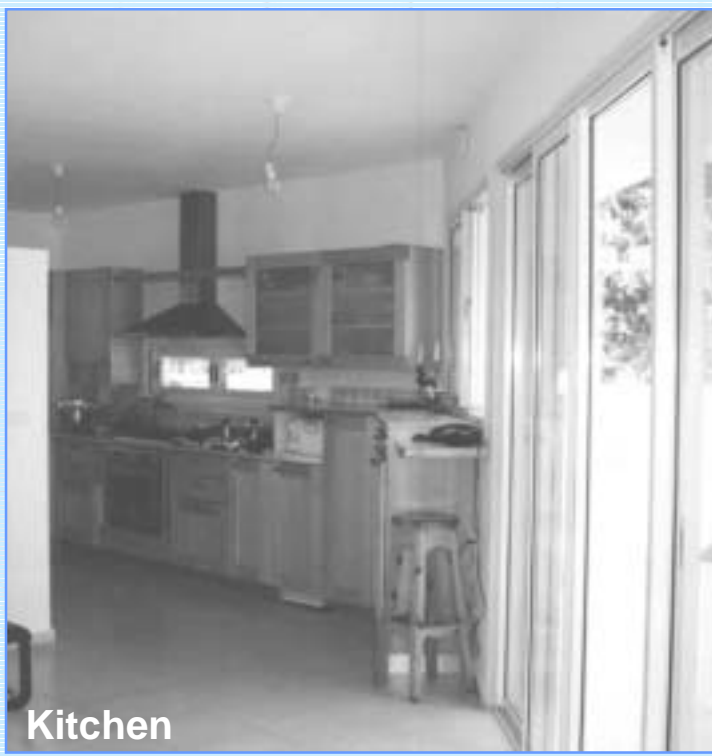
Foundations



Manzur Residence



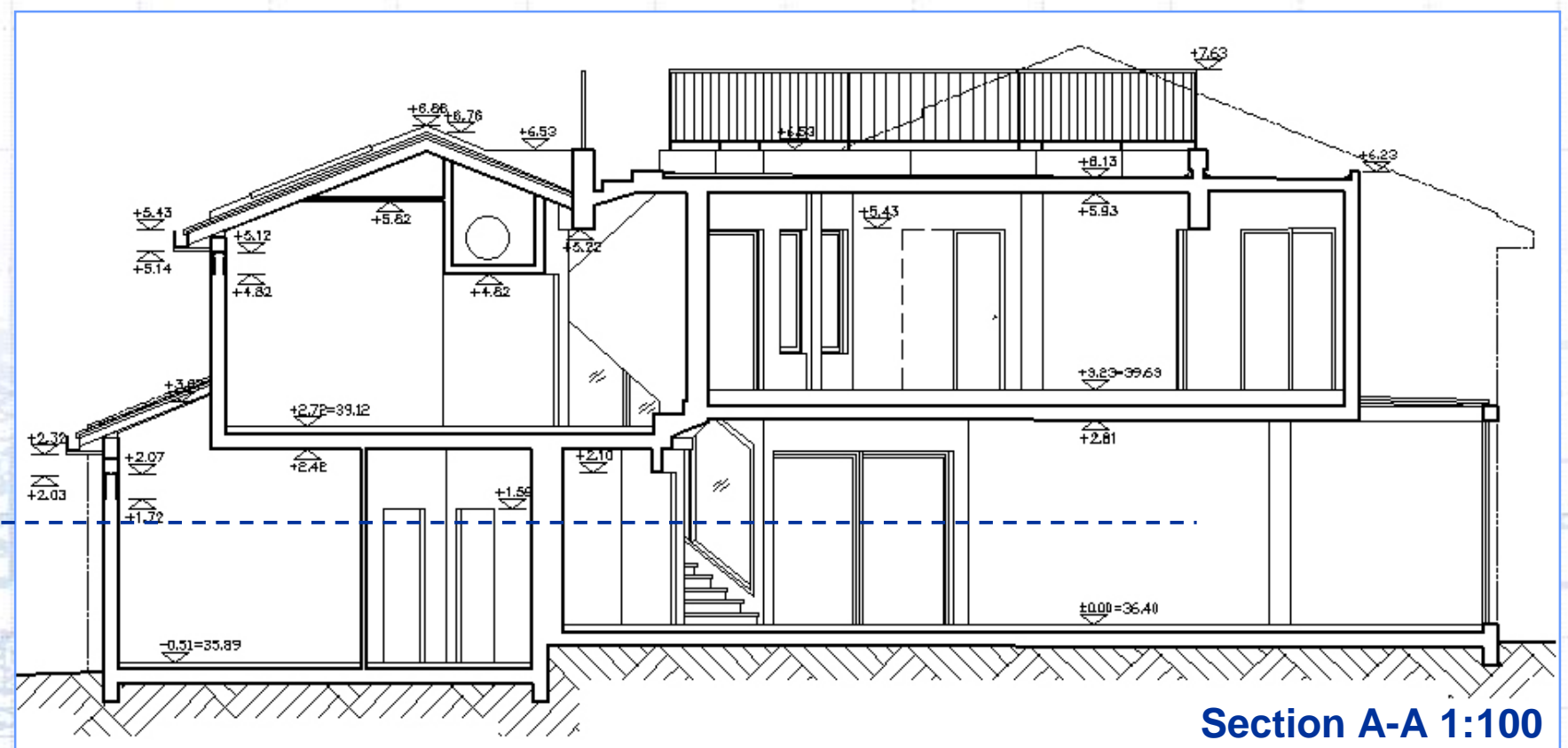
Entrance path



Kitchen



East elevation 1:100

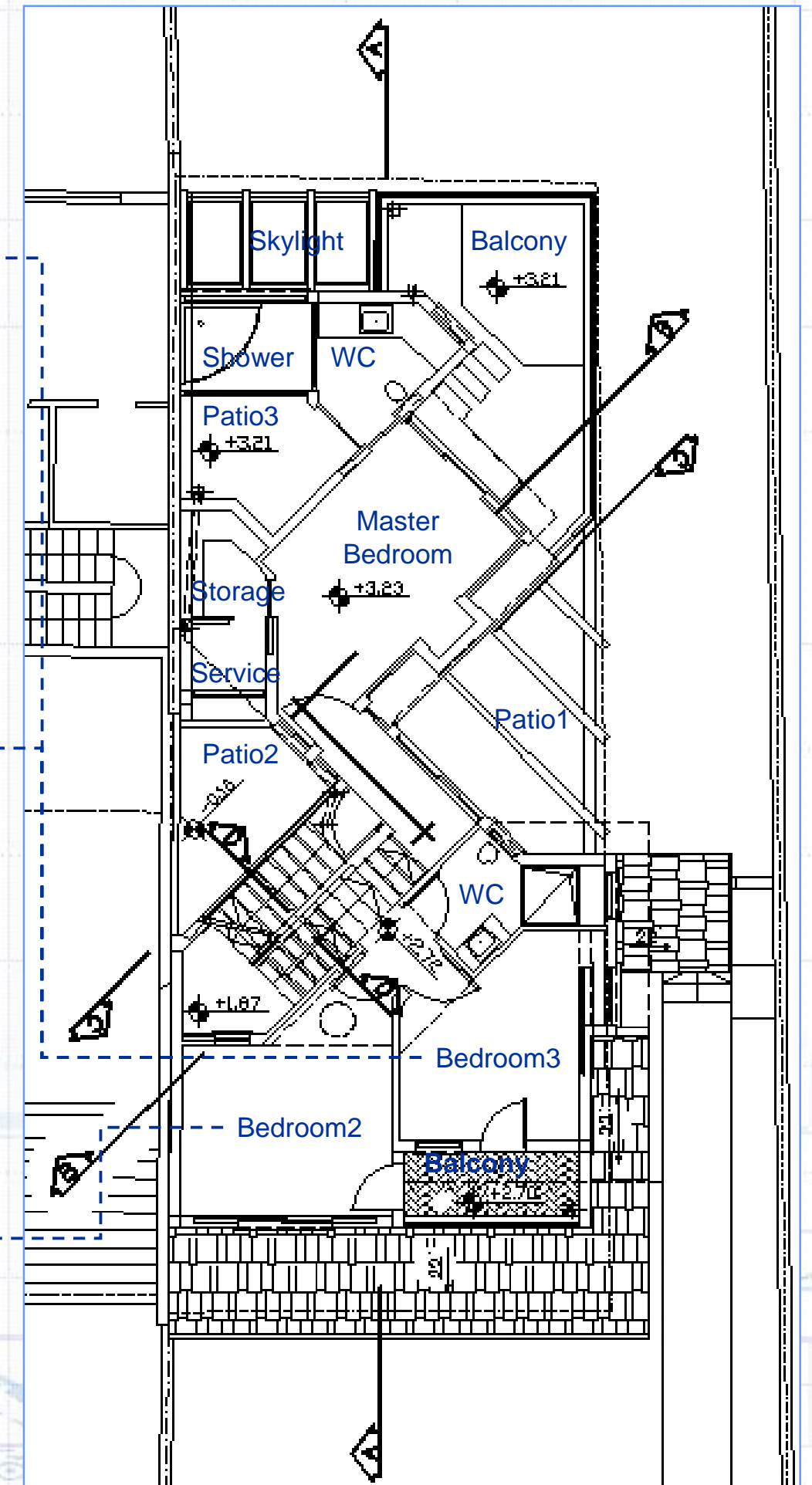
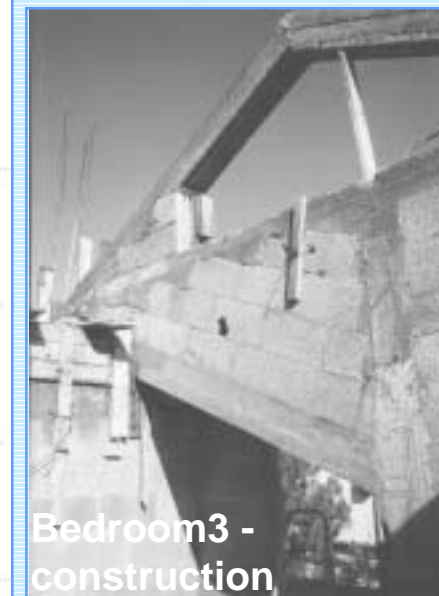
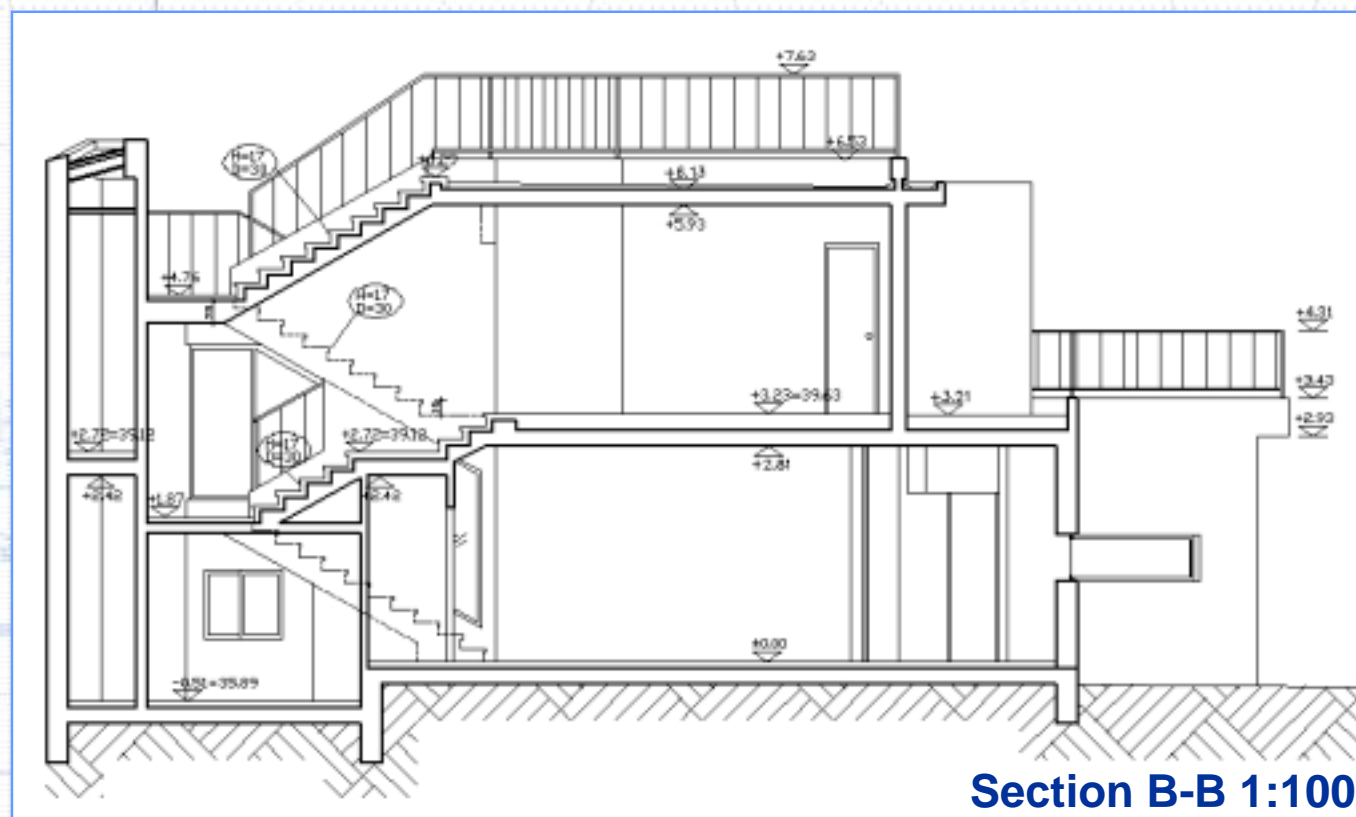


Section A-A 1:100

Manzur Residence

The design concept:

- A weightless diagonal passage, between two patios, divides the house into two main vertical volumes and splits each of the two floors into two levels accordingly.
- The south volume then trimmed to merge with the neighbour's roof while the north volume breaks further down to an aggregated form.



2nd floor plan 1:100

Manzur Residence

