

The Hampton's

Landscape Concept, Masterplanning, Design and Implementation for a Residential Development in Worcester Park, Surrey, UK

A 'Chris Blandford Associates' project, for which I managed the detailed design and tender package production.

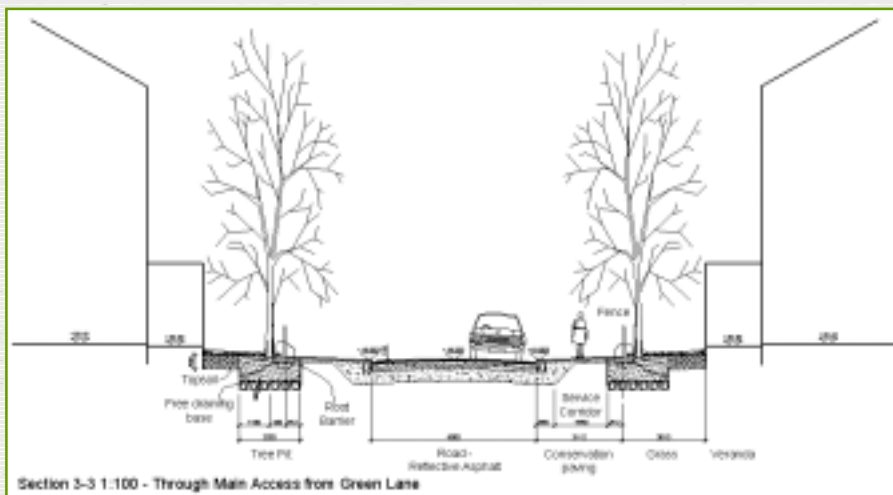
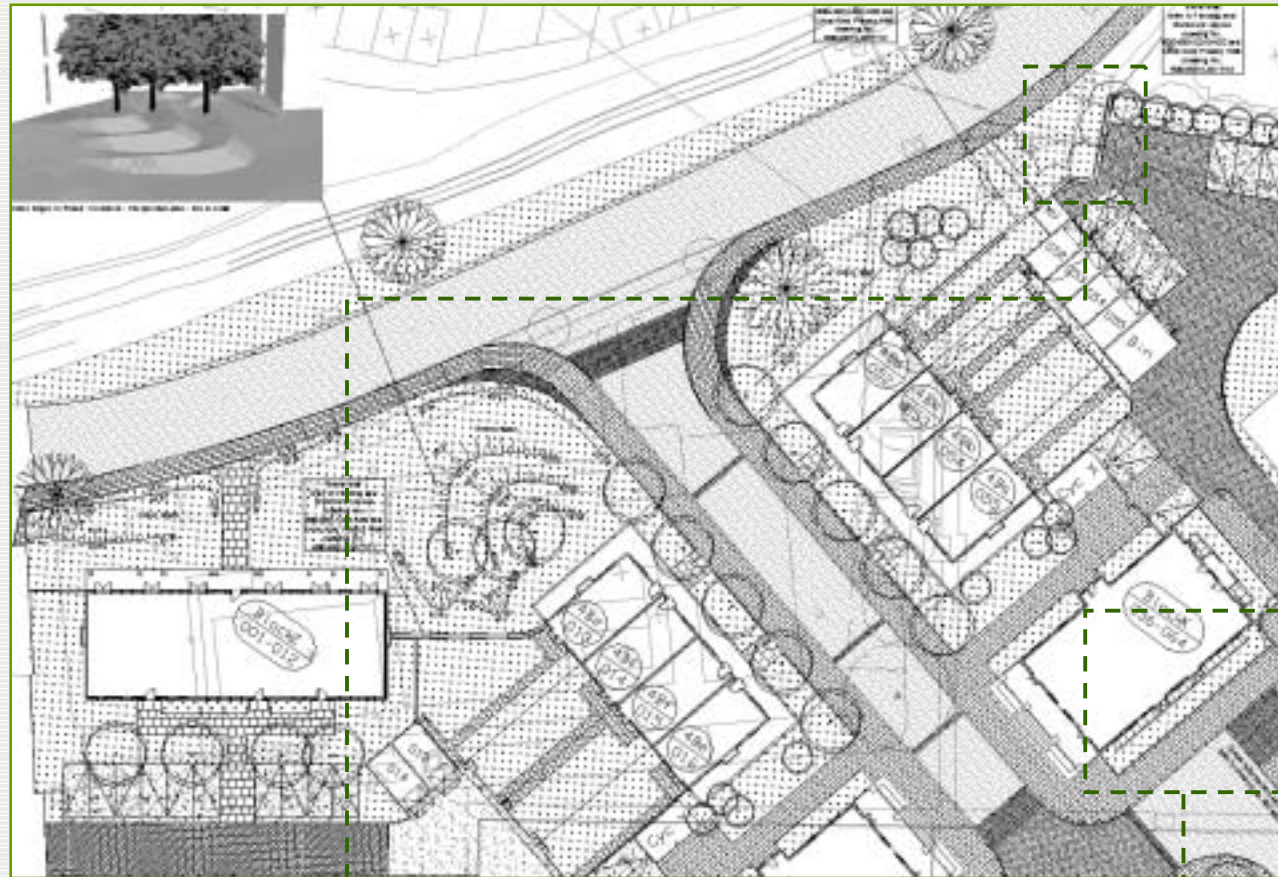
The New-England themed Phase 1 out of 5, covers the west part of the site, previously a Sewage Treatment Works site, and includes the entrance to the development, 157 private houses and affordable housing. The landscape design seeks to enhance the local quality of the housing and the external areas. At the heart of phase 1 is a strong community focus, including a community building and open spaces, providing a core identity for the whole development.

Client: St. James Group

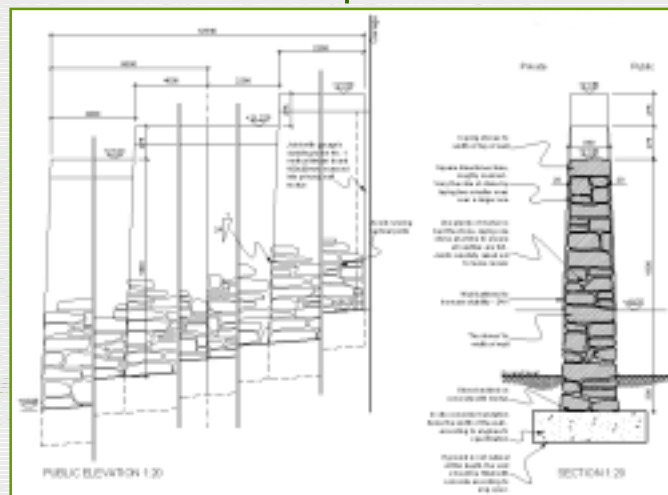
Area (Phases 1-5 and Parkland): 60 acres

Area of Phase 1: 6 acres

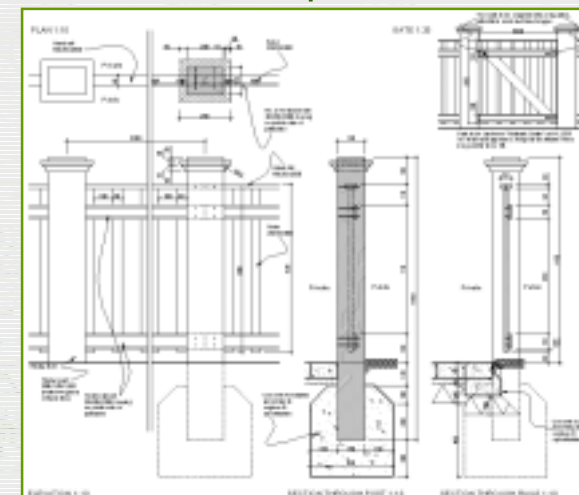
Site Entrance Landscape Layout 1:200



Entrance Street Section 1:100



Limestone Boundary Wall Detail



Picket Fence Detail

